

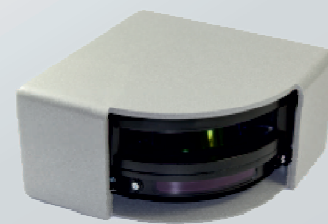
Human Detector[®]

PLATFORM LASER SCANNER FOR ARTWORK PROTECTION

Commercial datasheet



HD-PSV

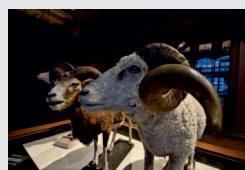
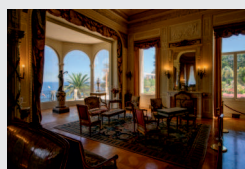
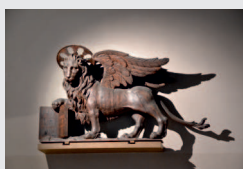


HD-PSH

LASER TECHNOLOGY FOR MUSEUMS AND EXHIBITIONS

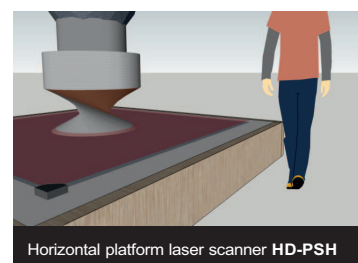
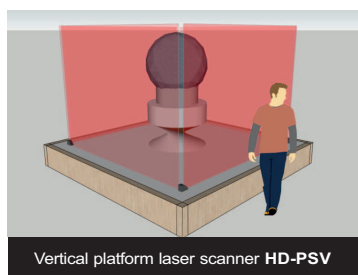
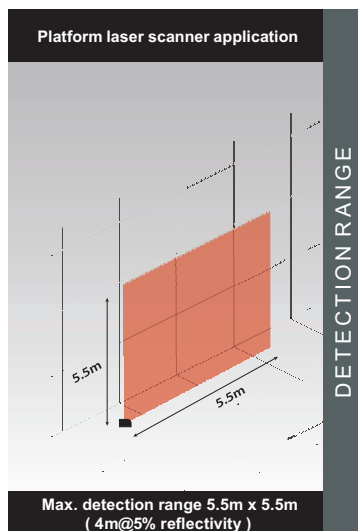
DESCRIPTION

The **Human Detector** platform laser scanners are developed for an easy integration in museums, galleries and exhibitions. Vertical and horizontal installations allows a wide range of applications. The robust aluminium enclosure offers a maximum grade of protection. The **HD-PSV** and **HD-PSH** laser scanners could be directly connected with the **Human Detector** sensor module (**Article: HD-SM**) and alarm box (**Article: HD-AB**).



Human[®]
Detector

Human Detector[®] - SECURITY MADE EASY



TECHNICAL SPECIFICATIONS

| | |
|--|---|
| Technology | Laser scanner, time-of-flight measurement |
| Detection mode | Presence |
| Max. detection range | Max. 5.5m x 5.5m (4m@5% reflectivity) |
| Opening angle | 90° |
| Angular resolution | 0.23° (400 spots within 90°) |
| Emission characteristics (IEC/EN 60825) | Wavelength 905nm; average output power 0.05mW CLASS 1 Wavelength 650nm; max. output CW power 3mW CLASS 3R Visible spot |
| Supply voltage | 12-24V DC \pm 15% (to be supplied from a SELV power source only) |
| Power consumption | \leq 2.3W, peak current: 1A |
| Response time | Max. 50ms + output activation delay (if requested) |
| Output | 1 opto (galvanic isolation - polarity free) Max. switching voltage: 42V AC/DC Max. switching current: 100mA 1 relay (free of potential contact) Max. contact voltage: 42V AC/DC Max. contact current: 1A (resistive) Max. switching power: 30W DC/60VA AC |
| LED-signals | 1 tri-colored LED: detection / output status |
| Dimensions | 127mm (L) \times 63mm (H) \times 127mm (D) (Horizontal laser scanner HD-PSH) 60mm (L) \times 120mm (H) \times 120mm (D) (Vertical laser scanner HD-PSV) |
| Colour | RAL 9007 grey-aluminium (other colors on request) |
| Tilt angles | \pm 2° (with vertical or horizontal housing) |
| Protection degree | IP66 (EN 60529) |
| Temperature range | -30°C to +60°C if powered |
| Humidity | 0-95% non-condensing |
| Vibrations | < 2G |
| Conformity | IEC 60825-1; IEC 61000-6-2; IEC 61000-6-3 |

Specifications are subject to change without prior notice. All values are measured in specific conditions.

DISCLAIMER This document as well as all other enclosed documents (quotation / specification / other) are provided "as is" without warranties of any kind, either expressed or implied, including but not limited to the implied warranties of merchantability, fitness for a particular purpose, or non-infringement. Information is supplied upon the condition that the persons receiving it will make their own determination as to its suitability for their purposes prior to use. In no event will heddier electronic be responsible for damages of any nature whatsoever resulting from the use of or reliance upon information from this document or the products to which the information refers.

www.human-detector.com

Human Detector® HD-PSV and HD-PSH

LASER DETECTORS FOR ARTWORK AND EXHIBIT PROTECTION

Human
Detector®

heddi er electronic GmbH
Raiffeisenstraße 24
48734 Reken
Germany

Phone +49 (0) 2864 95 178-0
Fax +49 (0) 2864 95 179-28
info@human-detector.com
www.human-detector.com