

Human Detector®

POWER RAIL LASER SCANNER FOR ARTWORK PROTECTION

Commercial datasheet

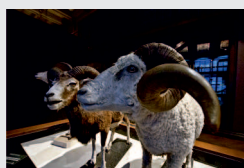


HD-PR

LASER TECHNOLOGY FOR MUSEUMS AND EXHIBITIONS

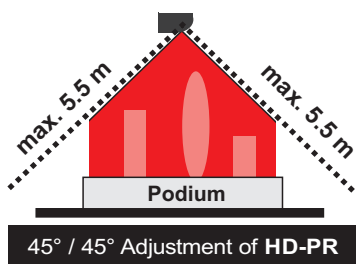
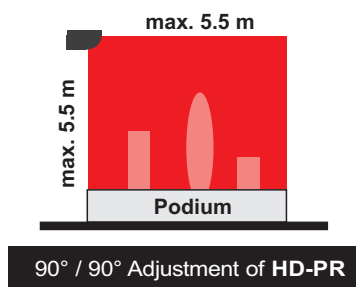
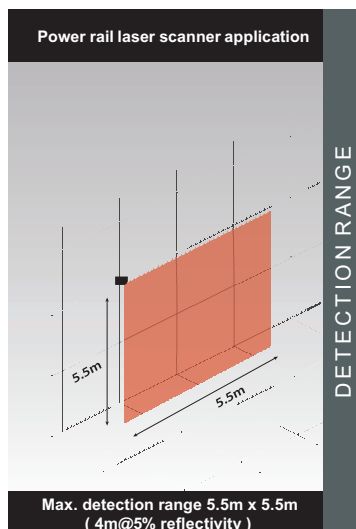
DESCRIPTION

The **Human Detector** power rail laser scanner was developed for an easy adaption to light systems in museums, galleries and exhibitions. The laser scanner mounting is compatible with all standard 3-phase power rails. The laser security curtain could be adjusted to fit with the exhibit requirements. The **HD-PR** system works totally stand-alone emitting an audible MP3-message if an alarm occurs.



Human®
Detector

Human Detector® - SECURITY MADE EASY



TECHNICAL SPECIFICATIONS

Technology	Laser scanner, time-of-flight measurement
Detection mode	Presence
Max. detection range	Max. 5.5m x 5.5m (4m@5% reflectivity)
Opening angle	90°
Angular resolution	0.23° (400 spots within 90°)
Emission characteristics (IEC/EN 60825)	Wavelength 905nm; average output power 0.05mW CLASS 1 Wavelength 650nm; max. output CW power 3mW CLASS 3R Visible spot
Supply voltage	230V, 50Hz provided by power rail
Power consumption	max. 16W by full audio volume
Response time	Max. 50ms + output activation delay (if requested)
Output	max. 10W audio power on internal speaker
LED-signals	1 tri-colored LED: detection / output status
Dimensions	185mm (L) x 227mm (H) x 60mm (D), weight 1220 gr.
Colour	RAL 9016 traffic white (other colours on request)
Temperature range	-10° C to +45° C
Humidity	0-95% non-condensing
Vibrations	< 2G
Conformity	IEC 60825-1; IEC 61000-6-2; IEC 61000-6-3

Specifications are subject to change without prior notice. All values are measured in specific conditions.

DISCLAIMER This document as well as all other enclosed documents (quotation / specification / other) are provided "as is" without warranties of any kind, either expressed or implied, including but not limited to the implied warranties of merchantability, fitness for a particular purpose, or non-infringement. Information is supplied upon the condition that the persons receiving it will make their own determination as to its suitability for their purposes prior to use. In no event will heddier electronic be responsible for damages of any nature whatsoever resulting from the use of or reliance upon information from this document or the products to which the information refers.

www.human-detector.com

Human Detector® HD-PR

LASER DETECTORS FOR ARTWORK AND EXHIBIT PROTECTION



heddi er electronic GmbH
Raiffeisenstraße 24
48734 Reken
Germany

Phone +49 (0) 2864 95 178-0
Fax +49 (0) 2864 95 178-28
info@human-detector.com
www.human-detector.com